



Brought to you by

DIRECTA USA

A Division of DirectaDentalGroup | directausa.com

WE CREATE SAFETY. TOGETHER.

DR. NASSEH ENDODONTIC MICROSURGERY SET



A focused, minimalistic instrument set supporting key microsurgical procedures:

- Apicoectomy
 - Retrofilling
 - Surgical root perforation repair
- ...and more

Rooted in the Surgical Lid-Technique developed by Dr. Allen Ali Nasseh. A modern approach that enhances efficiency, safety and precision in every endodontic surgery — from apicoectomy to root perforation repair.



SIMPLICITY. EFFICIENCY. SAFETY.

SET NO: 8314

9218
Mouth mirror handle,
single-ended, TRINOVO PEEK



4516
Mouth Mirrors Rhodium No. 5
(Ø24mm)



9218-DE
Mouth mirror handle double
end, TRINOVO PEEK



6412-CC
Micro mouth mirror, Ø 3 mm



6414-CC
Micro mouth mirror, oval 3x6 mm



7693
Scalpel handle TRINOVO,
straight



8428
Perio Probe CP15/
Explorer DG16



9203
Micro plugger D-1,
DLC coated



8461-CC
Perforation repair instrument,
DLC coated



9557
Periosteal elevator B1,
TRINOVO PEEK



8445
Periosteal elevator 2/4,
DLC coated



8449
Periosteal elevator MOLT 9,
DLC coated



9220
Periosteal elevator PRICHARD,
DLC coated



3308
Ring curette, Ø 2 / Ø 3 mm,
DLC coated



8442
Posterior Curette,
DLC coated



8401
Cheek retractor MINNESOTA



8401-N
Cheek retractor MINNESOTA
with 2.0 mm protrusion



4075
Pliers PERRY, serrated,
curved, 13 cm



4078
Pliers COLLEGE, serrated,
angled, 15 cm



4018
Scissors IRIS, straight
11.5 cm



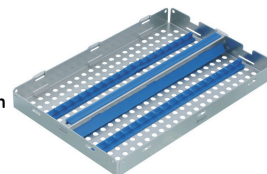
7664
TC-Needle Holder CASTROVIEJO
with thick jaws, straight, 14 cm



7609-BL

optional

Steritray MAXI with longitudinal bar, blue, 275 x 180 mm



Clinical Fields of Application:

- 1** Access to surgical site
- 2** Apicoectomy
- 3** Retrofilling
- 4** Surgical Repair of root defects/perforations

| Article | Instrument | Application | 1 | 2 | 3 | 4 |
|---------|---|---|---|---|---|---|
| 7609-BL | Steritray MAXI with longitudinal bar, | Holds the 18 instruments composing the kit. Open face and simple access allows quick set up and clean up. | X | X | X | X |
| 9218 | Mouth mirror handle PEEK single ended | An ergonomically designed universal mouth mirror handle. The black color effectively reduces light reflection, ensuring clear visualization during surgical procedures . | X | X | | X |
| 4516 | Mouth mirrors, rhodium, no. 5 (Ø24mm), PU: 12 pieces | The rhodium mouth mirror provides bright, true-color, distortion-free reflection for precise indirect vision. | X | X | | X |
| 7693 | Scalpel handle TRINOVO straight | A round ergonomic scalpel handle designed for various flap incisions. It allows for enhanced maneuverability, enabling more precise and controlled incisions. | X | | | |
| 8428 | Perio Probe CP15/Explorer DG16 | The explorer DG16 is used to sound the bone and detect fenestrations caused by the lesion. The probe CP15 is used to evaluate the depth of the drilling into the osteotomy, in correlation with CBCT | X | X | | X |
| 9557 | Periosteal elevator B1 | A double end flap elevator used for smaller, detailed flap elevations in either submarginal or intrasulcular incisions. | X | | | |
| 8445 | Periosteal Elevator 2/4 ENDOBLACK | A double end flap elevator used for the detailed and small-scale elevation of flap edges and papilla in submarginal or intrasulcular incisions. Essential for precise flap elevation in delicate surgical areas. | X | | | |
| 8449 | Periosteal elevator MOLT 9, ENDOBLACK | This double end flap elevator is used after a Buser #1 for a broad scale elevation for elevating flap edges and papilla. | X | | | |
| 8401 | Cheek retractor MINNESOTA | Conventional Minnesota retractor used for flap retraction during surgical flap procedure | X | | | X |
| 8401-N | Retractor MINNESOTA acc. to Dr. Nasseh with 2,0 mm protrusion | Designed for use with a conventional retractor, this instrument securely retracts soft tissue by providing a stable point of support through its integrated protrusion. Its improved grip minimizes slippage and helps reduce hand fatigue during prolonged | X | | | X |
| 3308 | Ring curette, Ø 2 / Ø 3 mm | Designed to efficiently remove granulation tissue and cysts while scraping the bony crypt clean. | X | | | |
| 8442 | Posterior Curette, ENDOBLACK | Double end curette for cleaning granulation tissue tags around and behind roots during curettage of the lesion, before and after access to root end. | X | | | X |

| Article | Instrument | Application | 1 | 2 | 3 | 4 |
|---------|--|--|---|---|---|---|
| 9218-DE | Mouth mirror handle, PEEK double ended | This double end ergonomically designed mouth mirror handle offers versatile functionality, accommodating a range of mirror sizes for enhanced flexibility during procedures. The black color effectively reduces light reflection, ensuring optimal, distortion-free visualization. | | | X | X |
| 6412-CC | Micro mouth mirror, Ø 3 mm, PU: 1 piece | Round micro-mirror for visualization of the apex throughout the apicoectomy, retrograde filling or root repair procedure. | | | X | X |
| 6414-CC | Micro mouth mirror, oval 3x6 mm, PU: 1 piece | Oval-shaped micro-mirror for visualization of deeper crypts, where the root is far from the cavity area of the bone. Used throughout the apicoectomy, retrograde filling, or root repair procedure. | | | X | X |
| 9203 | Micro plugger D1 ENDOBLACK | Double end plugger designed used for validating apical preparation size and depth, followed by compacting retrofilling material into the preparation. | | | X | X |
| 8461-CC | Perforation repair instrument | Used to deliver bioceramic putty and insert it into the apical preparation for the surgical Lid Technique | | | X | X |
| 9220 | Periosteal elevator PRICHARD, ENDOBLACK | Used for flap elevation and carrying bone graft materials into the surgical site. The flat end can also be used for flap retraction or protection during suction. | X | | | |
| 4075 | Pliers PERRY | Used to remove granulation tissue, biopsy samples, and resected root ends, as well as to manipulate tissue and approximate flaps before suturing. It offers a firm yet delicate grip with ergonomic comfort and control, helping maintain a clear surgical field during site preparation after apicoectomy or root perforation repair. | X | | | |
| 7664 | TC-Needle Holder CASTROVIEJO with thick jaws, straight | Needle holder used to suture flap into place. Smaller size and precision tip allows comfortable handling and precision in suturing. | X | | | |
| 4018 | Scissors IRIS, straight | Used for cutting sutures or other materials during the procedure. | X | | | |
| 4078 | Pliers COLLEGE | Non-locking cotton pliers used for carrying gauze or pellets to the surgical site or for removing tissue/materials. | X | X | X | X |



Dr. Allen Ali Nasseh

What Dr. Nasseh thinks about it...

“With this refined and focused set of instruments, I can achieve optimal surgical results. My goal in developing this kit was to provide colleagues worldwide with reliable tools that make microsurgery more efficient and predictable. I am glad to share my experience and further guidance with you, so that together we can advance clinical outcomes for our patients.”



Available and Distributed in the USA by:

Brought to you by
DIRECTA USA
 A Division of DirectaDentalGroup | directausa.com



DirectaDentalGroup
DIRECTA topdental ROSEFF ROHWIG proydentia DEPELLO parkell omsurg

Directa USA

64 Barnabas Rd Unit3, Newtown CT 06470 Phone: 800.537.8763
www.directausa.com | www.kohler-dental.de
infousa@directaysa.com

[allen_ali_nasseh](#) | [kohler_dental](#)

[@AANasseh](#) | [@kohlerdental](#)